



20 Brynteg | | Treharris | CF46 5RF

NO ONWARD CHAIN * VERY UNIQUE HOME * DESIGNED TO THE HIGHEST STANDARD * STYLISH KITCHEN * OPEN PLAN LIVING * EXTENDED MASTER BEDROOM WITH ENSUITE & WARDROBE * LOFT BEDROOM * BEAUTIFUL BATHROOM. This home wont hang around, simply must be seen to be appreciated.

£170,000

- No chain
- Master ensuite & wardrobe
- Stylish kitchen
- Open plan living
- Loft bedroom



Property Description

HALL

11' 9" x 2' 11" (3.60m x 0.90m) Stairs to first floor. Radiator. Door to lounge/diner.

LOUNGE/DINER

20' 8" x 12' 7" (6.32m x 3.85m) Stylish and spacious open plan lounge/diner. Bay window to front. French doors to rear garden. Carpeted floor. Radiator. Door to kitchen & WC positioned under the stairs.

WC

Cleverly positioned under the stairs and comprising; WC & wash basin. Tiled floor. Extractor fan.

KITCHEN

8' 10" x 8' 10" (2.70m x 2.70m) Stunning kitchen fitted with gloss finished, shaker style units. Work surfaces over with inset sink & drainer. Integrated appliances; dishwasher,

washing machine, oven and hob with extractor over. Tiled floor with underfloor heating. Tiled splash backs. Window to side. Spotlighting.

TO THE FIRST FLOOR

LANDING

Doors to three bedrooms and bathroom. . Stairs to loft room with storage under.

BEDROOM ONE

9' 4" x 8' 1" (2.86m x 2.48m) 48 Impressive main bedroom with walk-through wardrobe area with fitted hanging and drawer space (2.62m x 1.63m). Main bedroom area comfortable for a double bed. Vaulted ceiling. Window to side. Radiator.

ENSUITE

9' 4" x 2' 11" (2.86m x 0.89m) Well designed ensuite area

comprising; walk-in shower, WC & wash basin. Tiled floor & splash backs. Window to side. Towel radiator.

BEDROOM TWO

14' 9" x 7' 9" (4.52m x 2.38m) Spacious double bedroom. Carpeted floor. Window to front. Radiator.

BEDROOM THREE

9' 6" x 6' 10" (2.92m x 2.10m) Comfortable single bedroom. Carpeted floor. Window to front. Radiator.

BATHROOM

9' 3" x 5' 10" (2.82m x 1.78m) High spec suite comprising; bathtub with shower over, WC and wall hung basin. Tiled floor & feature wall. Window to rear. Towel radiator. Spotlighting.

LOFT ROOM/BEDROOM FOUR

11' 11" x 10' 5" (3.64m x 3.18m) Great space, ideal for a double bedroom. Carpeted floor. Velux windows to front &

rear. Eaves storage. Radiator.

TO THE OUTSIDE

To the front Forecourt area.

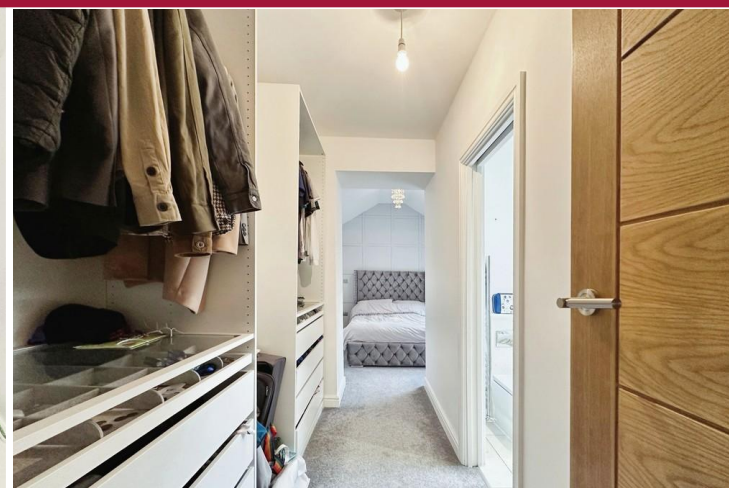
TO THE REAR

Step out onto a patio courtyard. Steep set of steps upto lawn area. Access to rear lane.

In accordance with the 1993 Misrepresentation Act the agent has not tested any apparatus, equipment, fixtures, fittings or services and so, cannot verify they are in working order, or fit for their purpose. Neither has the agent checked the legal documentation to verify the leasehold/freehold status of the property. The buyer is advised to obtain verification from their solicitor or surveyor. Also, photographs are for illustration only and may depict items which are not for sale or included in the sale of the property, All sizes are approximate.

INDEPENDENT MORTGAGE SERVICE AVAILABLE.

Your home is at risk of being repossessed if you do not keep up repayments on your mortgage.





Tenure

Freehold

Council Tax Band

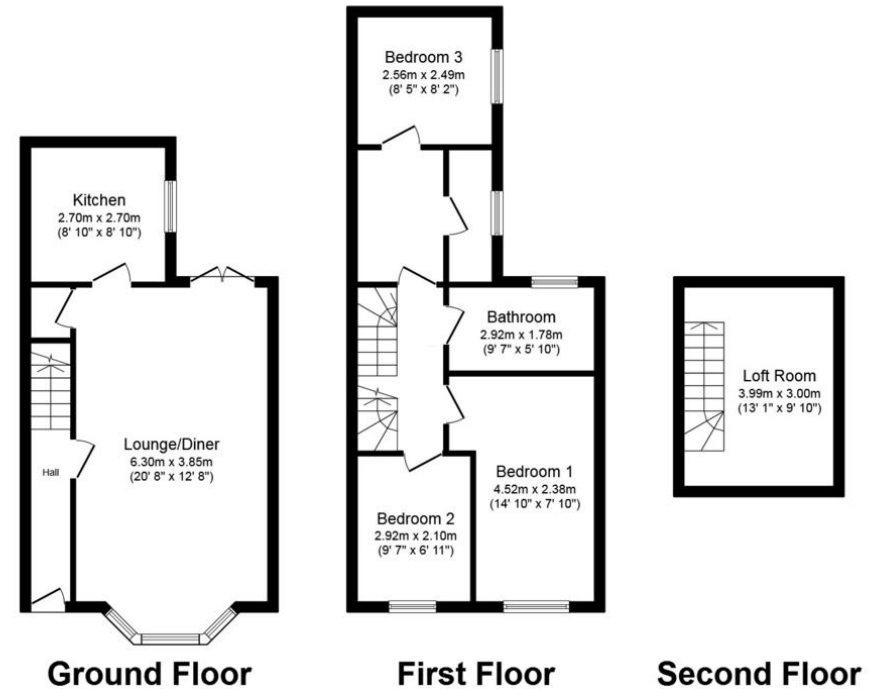
Viewing Arrangements

Strictly by appointment

Contact Details

22 Penallta Road
Ystrad Mynach
Hengoed
Mid Glamorgan
CF82 7AP

www.lucasestates.net
info@lucasestates.net
01443 862862



Total floor area 95.2 m² (1,025 sq.ft.) approx

This plan is for illustration purposes only and may not be representative of the property. Plan not to scale. Powered by PropertyBox

%epcGraph_c_1_349%

Agents Note: Whilst every care has been taken to prepare these sales particulars, they are for guidance purposes only. All measurements are approximate and are for general guidance purposes only and whilst every care has been taken to ensure their accuracy, they should not be relied upon and potential buyers are advised to recheck the measurements