



Hengoed Road | Penpedairheol | Hengoed | CF82 8BS

UNIQUE LOCATION DOWN A COUNTRY LANE WITHIN AN ESTABLISHED HOUSING DEVELOPMENT * GREAT POTENTIAL TO IMPROVE * SPACIOUS LOUNGE * KITCHEN * THREE BEDROOMS * LARGE GARDEN * BACKS ONTO FARMLAND * GARAGE. Must be seen to be appreciated, brilliant potential in a unique location.

£290,000

- Large garden
- Unique location
- No chain
- Garage
- Great potential



Property Description

HALL

Doors to all rooms

LOUNGE

17' 8" x 15' 8" (5.40m x 4.80m) Generously sized kitchen. Carpeted floor. Windows to side & rear. Two radiators. Door to kitchen.

KITCHEN

13' 1" x 11' 10" (4.00m x 3.61m) Nicely sized kitchen offering superb potential to improve.

BEDROOM ONE

13' 0" x 10' 11" (3.98m x 3.34m) Double bedroom. Carpeted floor. Window to rear overlooking farmland. Radiator

BEDROOM TWO

10' 8" x 0' 11" (3.26m x .3.02m) Double bedroom. Carpeted

floor. Window to side. Radiator.

BEDROOM THREE

10' 8" x 8' 11" (3.26m x 2.72m) Double bedroom. Carpeted floor. Window to rear overlooking farmland. Radiator

BATHROOM

5' 9" x 5' 6" (1.76m x 1.68m) Fitted with Bath tub & WC. Window to front. Radiator.

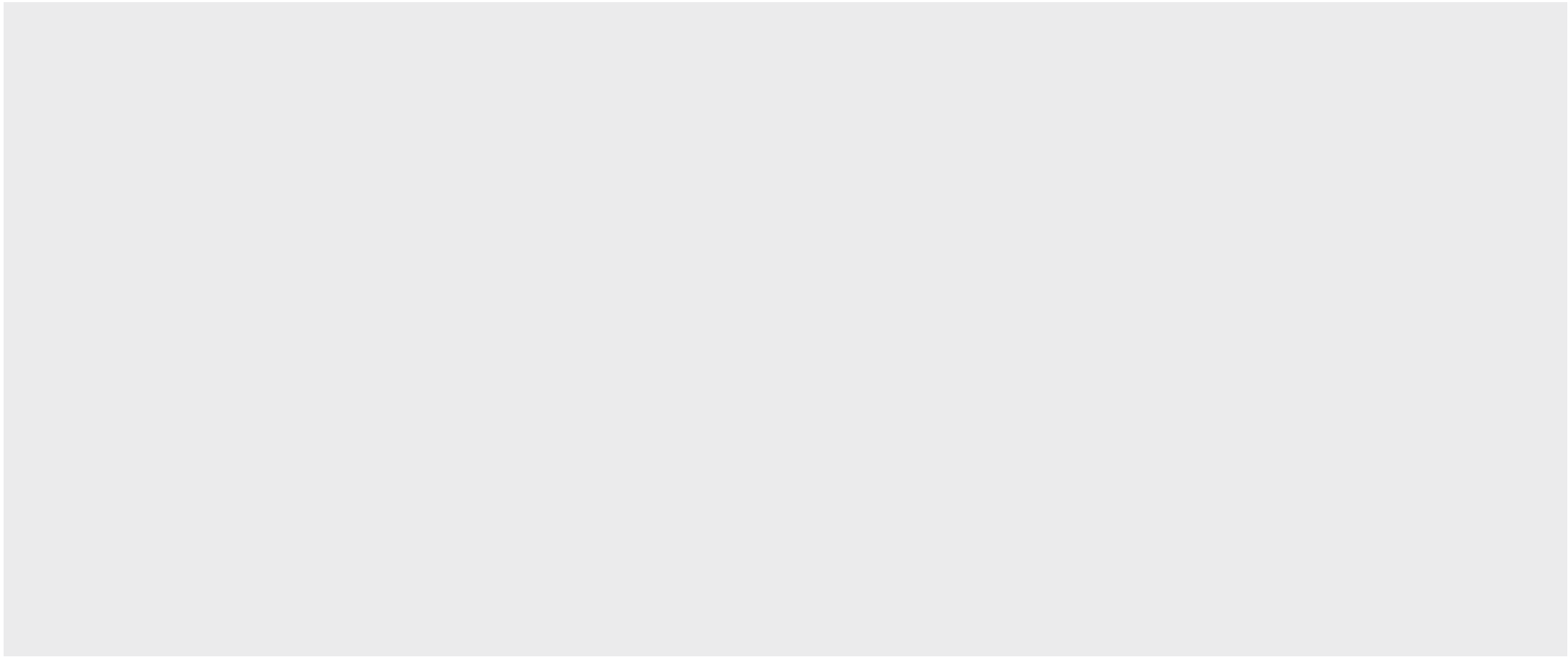
WC

In accordance with the 1993 Misrepresentation Act the agent has not tested any apparatus, equipment, fixtures, fittings or services and so, cannot verify they are in working order, or fit for their purpose. Neither has the agent checked the legal documentation to verify the leasehold/freehold status of the property. The buyer is advised to obtain verification from their solicitor or surveyor. Also, photographs are for illustration only

and may depict items which are not for sale or included in the sale of the property, All sizes are approximate.

INDEPENDENT MORTGAGE SERVICE AVAILABLE.

Your home is at risk of being repossessed if you do not keep up repayments on your mortgage.





Tenure

Freehold

Council Tax Band

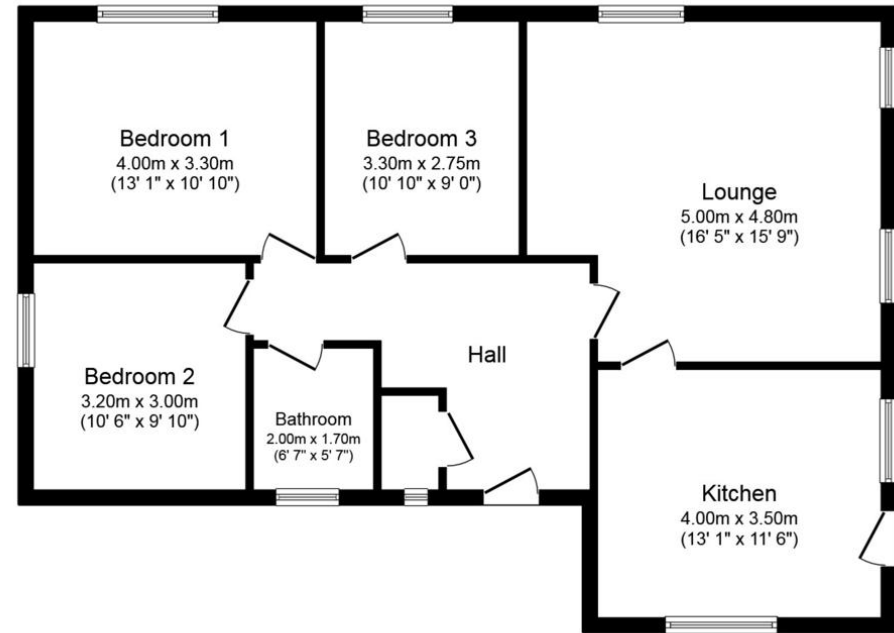
Viewing Arrangements

Strictly by appointment

Contact Details

22 Penallta Road
Ystrad Mynach
Hengoed
Mid Glamorgan
CF82 7AP

www.lucasesstates.net
info@lucasesstates.net
01443 862862



Floor Plan

Total floor area 86.1 m² (926 sq.ft.) approx

This plan is for illustration purposes only and may not be representative of the property. Plan not to scale. Powered by PropertyBox

%epcGraph_c_1_349%

Agents Note: Whilst every care has been taken to prepare these sales particulars, they are for guidance purposes only. All measurements are approximate and are for general guidance purposes only and whilst every care has been taken to ensure their accuracy, they should not be relied upon and potential buyers are advised to recheck the measurements